

Laboratory Development Coating System

For Developmental Pan Coating Processes

Portable Self-Contained System

Six Interchangeable Pans:

0.5L, 1.5L, 2.5L, 4.0L, 6.0L & 8.0L

Quick-Change Mounting System

Integral Drain for Rapid Cleaning

Anti-Bearding Spray Gun

Atomization & Spray Pattern Control for

Consistent Coating Processes

Easily Removable Spray Bar

Anti-Marking Coating Pans

Mirror-Smooth Finish

Removable Precision Mixing Baffles

Anti-Slide Baffles Formed into Pan

Abrasion Resistant Perforations

Integrated Peristaltic Solution Pump

Positioned on Front Cover for

Quick Process Changeover

Color Touchscreen Control System

Two Modes of Operation

Automatic Mode – Recipe Driven

Manual Mode

Validatable Process Control

Inlet Airflow and Pan Pressure

Exhaust or Inlet Temperature

Spray Rate and Delivery Amount



The LDCS Laboratory Development Coating System is designed with the unique capability of doing process feasibility, development, and clinical batches with six fully perforated coating pans available. This flexibility allows the LDCS to be used for a wide range of development coating processes. With a standard offer that includes an anti-marking coating pan, a recipe driven control system, an anti-bearding spray gun, and quick delivery, the LDCS provides the best solution for your developmental pan coating requirements.

VECTOR CORPORATION

675 44th Street, Marion, IA 52302-3800

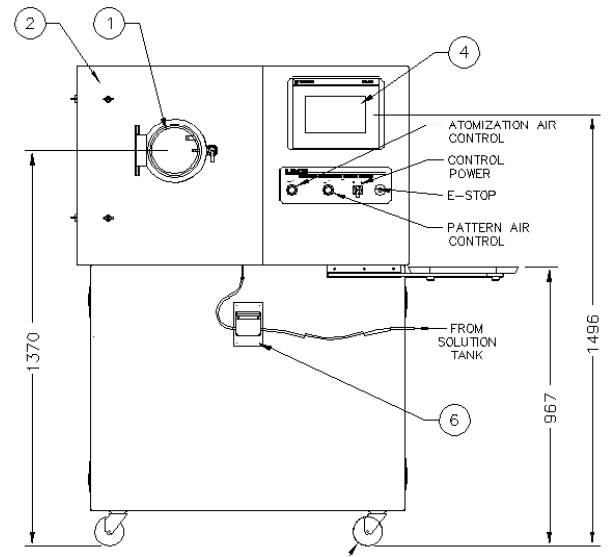
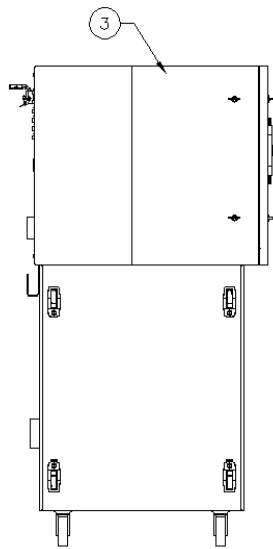
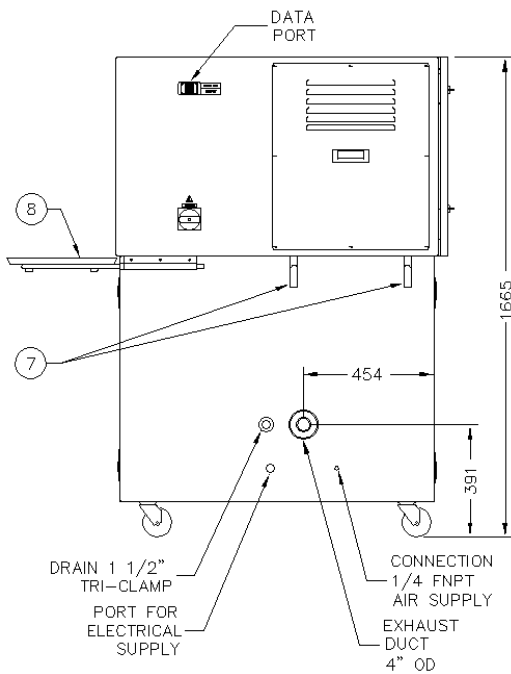
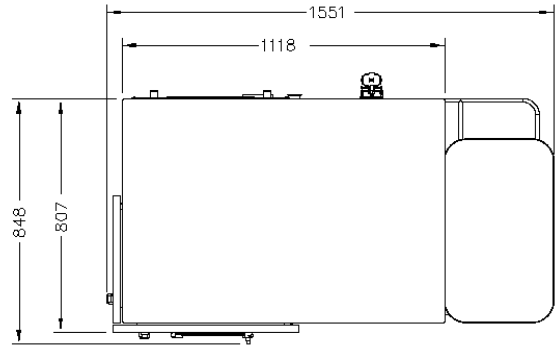
Phone: 319-377-8263 Fax: 319-377-5574

Email: vector.sales@vectorcorporation.com

www.vectorcorporation.com

LDCS

- 1 Pan Door (Product View/Access)
- 2 Pan Removal Door
- 3 Side Pan Access Door
- 4 Color Touchscreen OIP
- 5 Swivel Caster (Qty. 4)
- 6 Peristaltic Pump and Drive
- 7 Power Cord Holder
- 8 Auxiliary Tray – 40 lbs (Opt.)



NOTES:

1. Dimensions are shown in millimeters.
2. Dimensions shown are design dimensions and are subject to change due to manufacturer's tolerances.

TECHNICAL SPECIFICATIONS

Inlet Temperature: 25 - 100°C	Compressed Air Supply: 29 m ³ /hr @ 7 bar
Process Air Volume: 34 – 100 m ³ /hr	Electrical Supply : 230/3/60 or 400/3/50
Solution Delivery Rate: 1.4 – 50 mL/min	Weight: 295 kg (Approx.)
Pan Speed: 2 – 35 RPM	Design Standards: CE, UL, NFPA, CSA
Fluid Orifice / Spray Cap: 0.7 mm / 3.1 mm	(Solvent Rating Optional)

PAN DIAMETERS

0.5 L: 200mm	1.5 L: 290mm	2.5 L: 330mm	4.0 L: 370mm	6.0 L: 405mm	8.0 L: 450mm
--------------	--------------	--------------	--------------	--------------	--------------

Providing equipment and processing solutions around the world since 1972, Vector is a subsidiary of Freund Corporation located in Tokyo, Japan. Globally, the Freund/Vector team has thousands of system installations in the pharmaceutical, healthcare, chemical, agricultural, and food industries.