

Flo-Coater Fluid Bed Systems

For Pilot and Production Scale Drying, Coating, and Granulation Processes

Engineered for Reduced Process Times

Increased Product-To-Filter Distance for Increased
Airflow and Spray Rates

Tapered Expansion Chamber for Improved Product
Movement through Spray Zone

Flexible System Configurations

Top Spray Granulation and Drying Processes

Scalable Capacities up to 1900L

Full Range of Product, Solution, and Air Handling Options

Quick Changeover Design

Easily Removable and Cleanable Cartridge Filters

Superior Particle Retention

Durable Design – 2 Year Service Life

Optional Second Product Container to Minimize

Downtime Between Batches

Engineered for Safety of Personnel and Equipment

2-Bar Construction for Venting or Suppression

Ideal Design for Granulation Suites

Product Handling by Mechanical, Vacuum, or Gravity

Validatable, Easy-To-Use Control System

Automatic (Recipe-Driven) and Manual Modes

Optional Compu 4[®] Control System

21 CFR Part 11 Data and Recipe Management

Control of Entire Granulation Suite via Single OIP



*VFC-500 Shown with 1900L
Product Container and Optional
Cartridge Filter Lowering Device*

The VFC Flo-Coater System is uniquely engineered to meet the specific requirements for every installation. Every VFC Flo-Coater is backed by Vector's comprehensive range of services, including product and process development, process scale-up and transfer, calibration and maintenance programs, and proactive project management. Simple-to-use, economical, and designed for maximum processing effectiveness, the VFC Flo-Coater family is the ideal solution for your current and future fluid bed processing requirements.

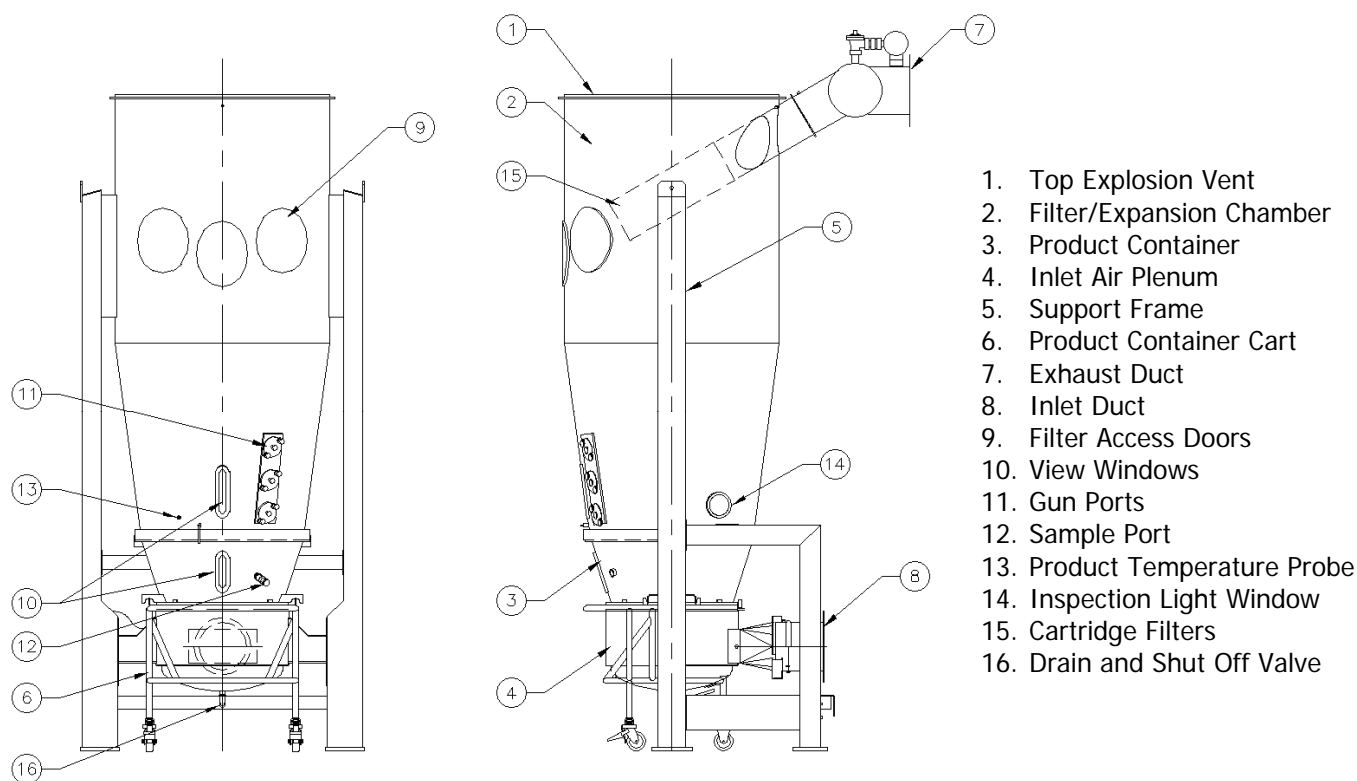
VECTOR CORPORATION

675 44th Street, Marion, IA 52302-3800

Phone: 319-377-8263 Fax: 319-377-5574

Email: vector.sales@vectorcorporation.com

www.vectorcorporation.com



MODEL	STANDARD SIZE		INCREASED SIZE		AIRFLOW
	Volume (Liters)	Working Capacity (kg)	Volume (Liters)	Working Capacity (kg)	m ³ /hr
VFC-30	100	30 - 50	120	36 - 60	3,000
VFC-60	220	66 - 110	250	75 - 125	4,500
VFC-120	420	126 - 210	500	150 - 250	6,000
VFC-200	660	198 - 330	800	240 - 400	8,000
VFC-300	1,100	330 - 550	1,200	360 - 600	9,500
VFC-500	1,570	471 - 785	1,900	570 - 950	12,000

Working Capacities Calculated Using 0.5 g/cc Bulk Density

Providing equipment and processing solutions around the world since 1972, Vector is a subsidiary of Freund Corporation located in Tokyo, Japan. Globally, the Freund/Vector team has thousands of system installations in the pharmaceutical, healthcare, chemical, agricultural, and food industries.